



Aquabocci Custom
in Matt Black

Contents

- 04 introduction
- 06 swimming pools
- 10 driveways
- 14 balconies
- 24 wet rooms

26

wundergrip

28

aquabocci custom

30

A100

32

A40

34

S66



04

style + innovation

Stylish channel draining

Aquabocci design and create stylish, innovative drainage solutions for bathrooms, wet rooms, showers, courtyards, balconies, driveways and pool surrounds.

Our dedicated team of industrial designers develop innovative drainage systems which are flexible, affordable and architecturally stunning. Our materials of choice are anodized alloy and PVC plastic for their strength, low maintenance and long life cycle. As a result of our product innovation our drains have been used on many of Europe's high profile public and residential projects.

Innovation from concept to construction

Throughout the design process we use technologies which have enabled us to develop cutting edge products such as the Aquabocci WunderGrip and Aquabocci Custom. The drainage systems we create are developed with architects and installers in mind and our products continue to evolve, changing to meet the ever-changing landscape of interior and exterior design.

Practical and affordable drainage

Our drainage products are easy to install, connect directly with all standard plumbing fittings and all our products have the Watermark certificate for plumbing products.

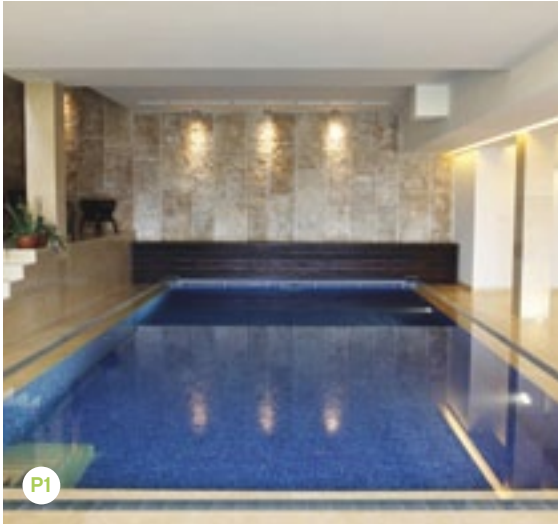
design a stylish swimming pool

Now you can create the beautiful designer pool area you've always wanted with Aquabocci swimming pool drainage solutions. Our industrial designed drains offer the flexibility to create a safe, rust free pool surround that is affordable and practical.





07



The perfect pool solution

The Aquabocci swimming pool drain is available in 2.8 metre lengths that are easily connected via our watertight sleeve for long runs of 10 metres or more. The innovative Aquabocci spigot can be located in any position along the entire base for ultimate flexibility.

At only 44mm deep, our drains can be installed on top of the concrete slab with ceramic or natural stone tiles, this enables the lid of the drain to lie flush with the tile top or bull-nosed pool coping for a smooth, slick finish. A bonus is that while tiling and construction is underway the polyformer foam insert provided will give the tiler an exact level to finish too as well as keep the tray free from rubbish and pebbles.

Why choose Aquabocci?

Simple and elegant, here are some facts about the Aquabocci swimming pool drains:

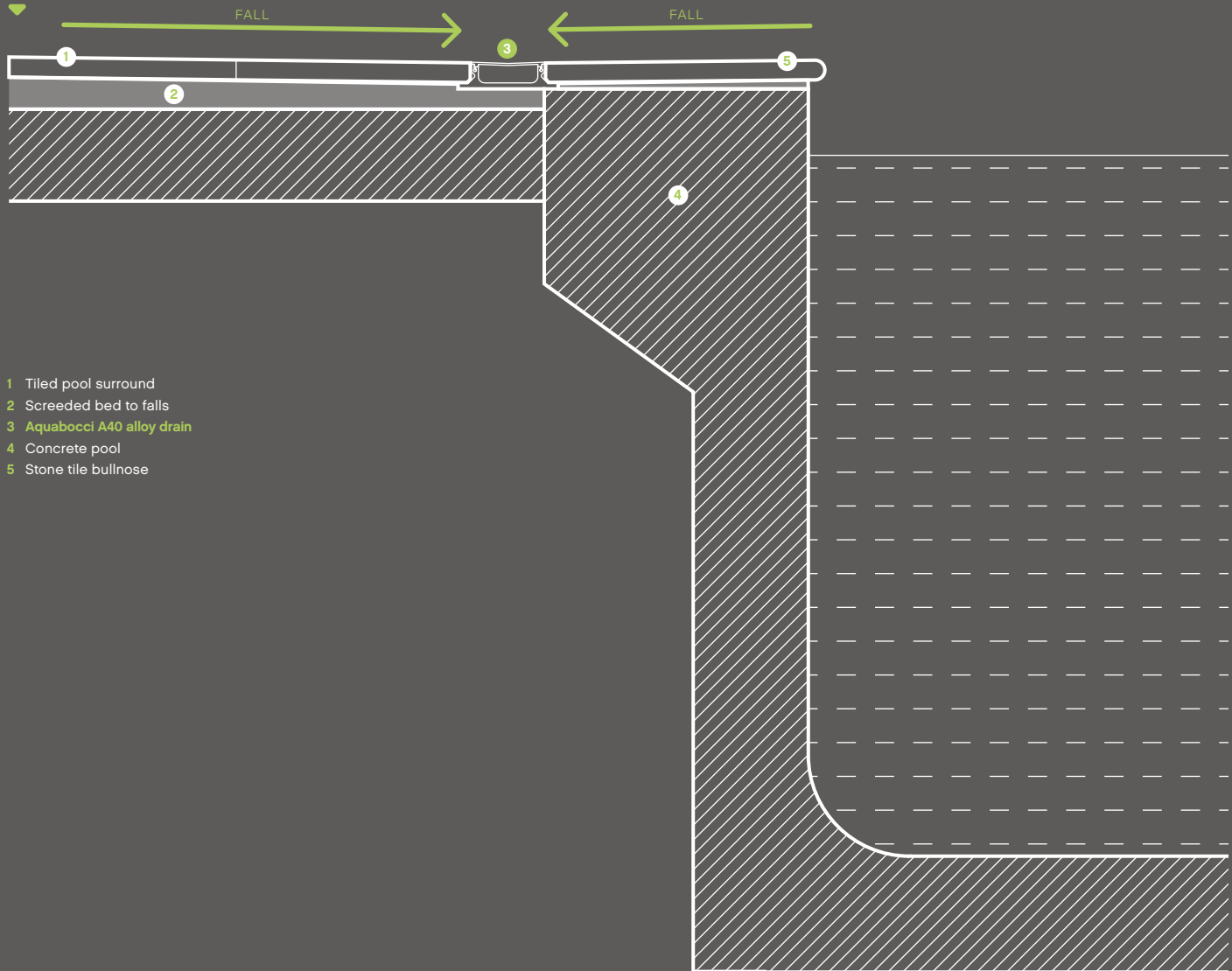
- **Heelguard safe:** Our child-proof drain top is safely secured and will not trap small fingers or high heels.
- **No more dirt build up:** Our cleverly designed system ensures that all dirt and hair will pass through the drain and not get caught on the drain lid.
- **Forget tea stains:** Our swimming pool drains are made from a marine grade, fully anodized alloy making them lightweight and easy to clean – they don't tea stain or etch like stainless steel.
- **Protect your garden:** unobtrusive drainage solutions stop pool chemicals travelling on to your lawn or garden.
- **Non-slip lid:** Our innovative WunderGrip achieves the R13 slip rating from the CSIRO (*view website for full test results*).

P1 A40 WunderGrip non-slip with Travertine Stone.

P2 A40 WunderGrip non-slip swimming pool drain.

Pool coping detail

Scale 1:10



- 1 Tiled pool surround
- 2 Screeded bed to falls
- 3 Aquabocci A40 alloy drain
- 4 Concrete pool
- 5 Stone tile bullnose



designer driveways

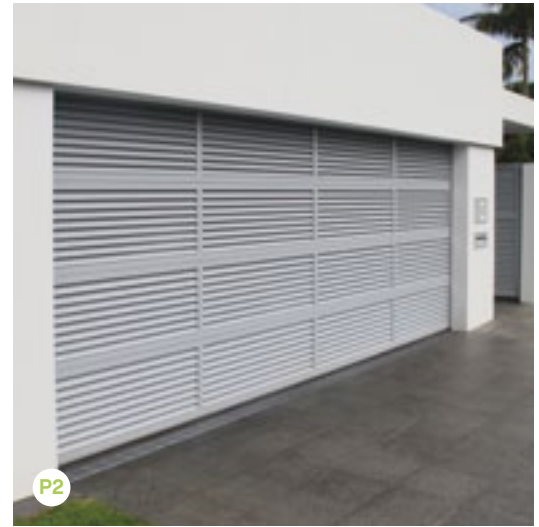
A driveway drain that works. We have developed a lineal drainage system that is specifically manufactured to handle the unique requirements of driveway drainage. Tested by the CSIRO for domestic vehicle traffic Aquabocci driveway drains have a specially designed base with a slick, PVC lining that reduces the chance of dirt build-up.



11



P1



P2

Designer driveways

The A100 drain allows a huge water flow rate of over 280 litres per minute, allowing it to cope with even the heaviest downpours and its depth reduces the chance of the drain becoming blocked from leaves and other debris.

The cleverly designed lid can be installed 5mm below your driveway's pavers to ensure the weight of any vehicle is distributed evenly across the driveway surface.

THE ALLOY LID WILL NOT TEA STAIN OR ETCH LIKE STAINLESS STEEL

Why choose Aquabocci?

Simple and elegant, here are some facts about the Aquabocci driveway drains:

- **Heelguard safe:** Our child-proof drain top is safely secured to ensure it cannot trap small fingers or high heels.
- **No more dirt build up:** Our cleverly designed system ensures that all dirt and hair will pass through the drain and not get caught on the drain lid.
- **Tested for domestic vehicle traffic:** Our driveway drains have been tested by the CSIRO for domestic vehicle traffic. *(view website for full test results).*
- **Protect your garden:** unobtrusive drainage solutions stop chemicals travelling on to your lawn or garden.
- **Non-slip lid:** Our innovative WunderGrip achieves the R13 slip rating from the CSIRO *(view website for full test results).*

P1 A100 driveway drain installed across a cobblestone driveway.

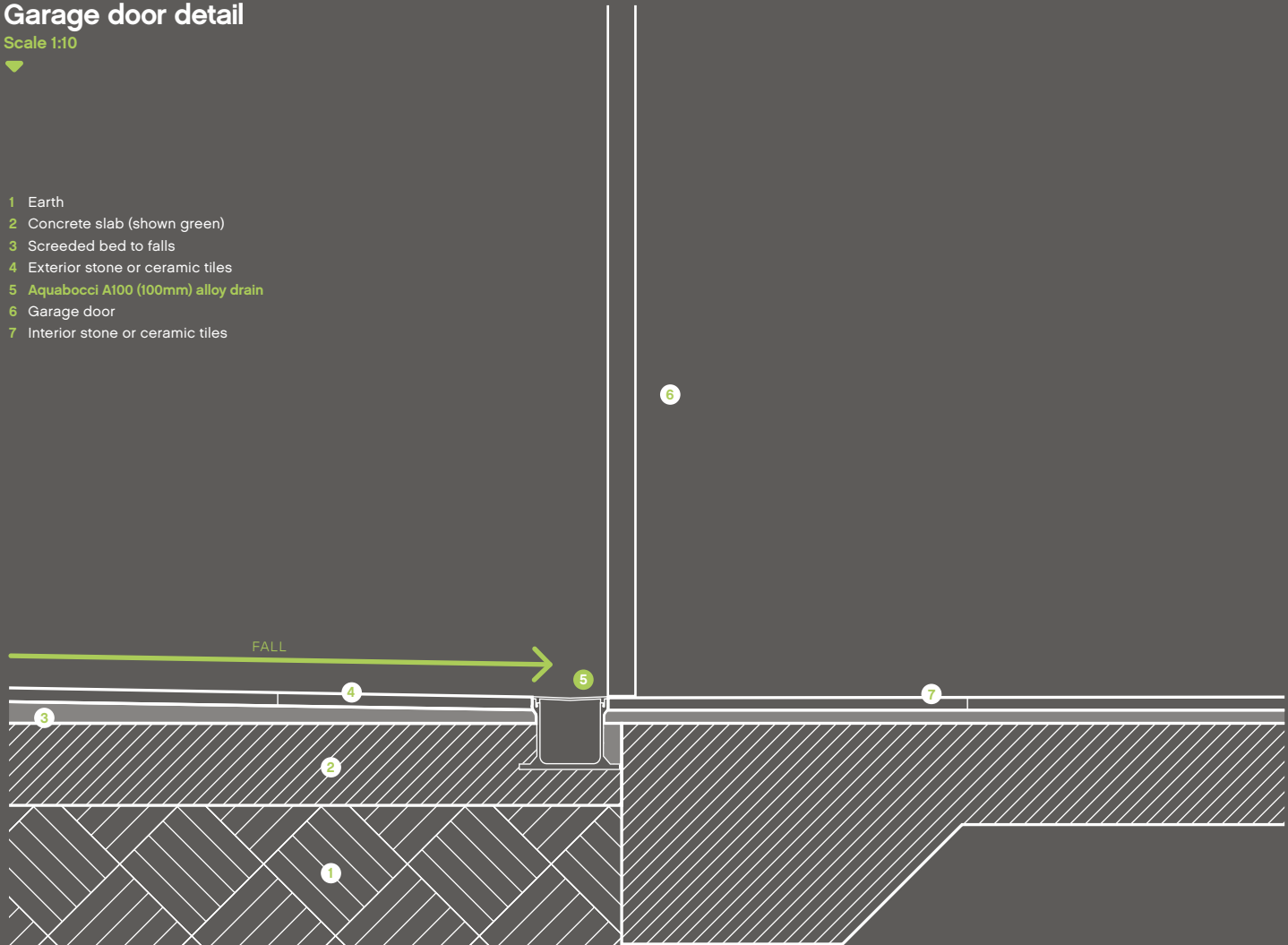
P2 A40 driveway drain installed on top of a concrete slab with stone tiles.

Garage door detail

Scale 1:10



- 1 Earth
- 2 Concrete slab (shown green)
- 3 Screeded bed to falls
- 4 Exterior stone or ceramic tiles
- 5 Aquabocci A100 (100mm) alloy drain
- 6 Garage door
- 7 Interior stone or ceramic tiles





balconies & courtyards

Form meets function with Aquabocci balcony drains. Traditional balcony drainage can be a major headache, usually you're stuck with several ugly, wedge-cut tiles with small waste drains that cause messy puddles and become clogged easily. Often water is directed to the edge of the balcony, causing dirty drip marks as it flows down to lower levels. Now you can choose a balcony drain that offers style and practicality – all in one.



15



Flexible drain solutions for your balcony

The Aquabocci balcony drain is available in 2.8 metre lengths that are easily connected via our watertight sleeve for long runs of 10 metres or more. The innovative Aquabocci spigot can be located in any position along the entire base for ultimate flexibility.

At only 44mm deep, Aquabocci balcony drains can be installed on top of the concrete slab with ceramic or natural stone tiles, this enables the lid of the drain to lie flush with the tile top for a smooth, slick finish.

THE 44MM DEEP TRAY IS PERFECT FOR USE ON A BALCONY

Why choose Aquabocci?

Simple and elegant, here are some facts about the Aquabocci balcony drains:

- **Heelguard safe:** Our child-proof drain top is safely secured to ensure it cannot trap small fingers or high heels.
- **No more dirt build up:** Our cleverly designed system ensures that all dirt and hair will pass through the drain and not get caught on the drain lid.
- **Forget tea stains:** Our balcony drains are made from a marine grade, fully anodized alloy making them lightweight and easy to clean – they don't tea stain or etch like stainless steel.
- **Protect your garden:** Unobtrusive drainage solutions stop pool chemicals travelling on to your lawn or garden.
- **Non-slip lid:** Our innovative WunderGrip achieves the R13 slip rating from the CSIRO (*view website for full test results*).

P1 A100 drain installed with 50mm stone pavers.

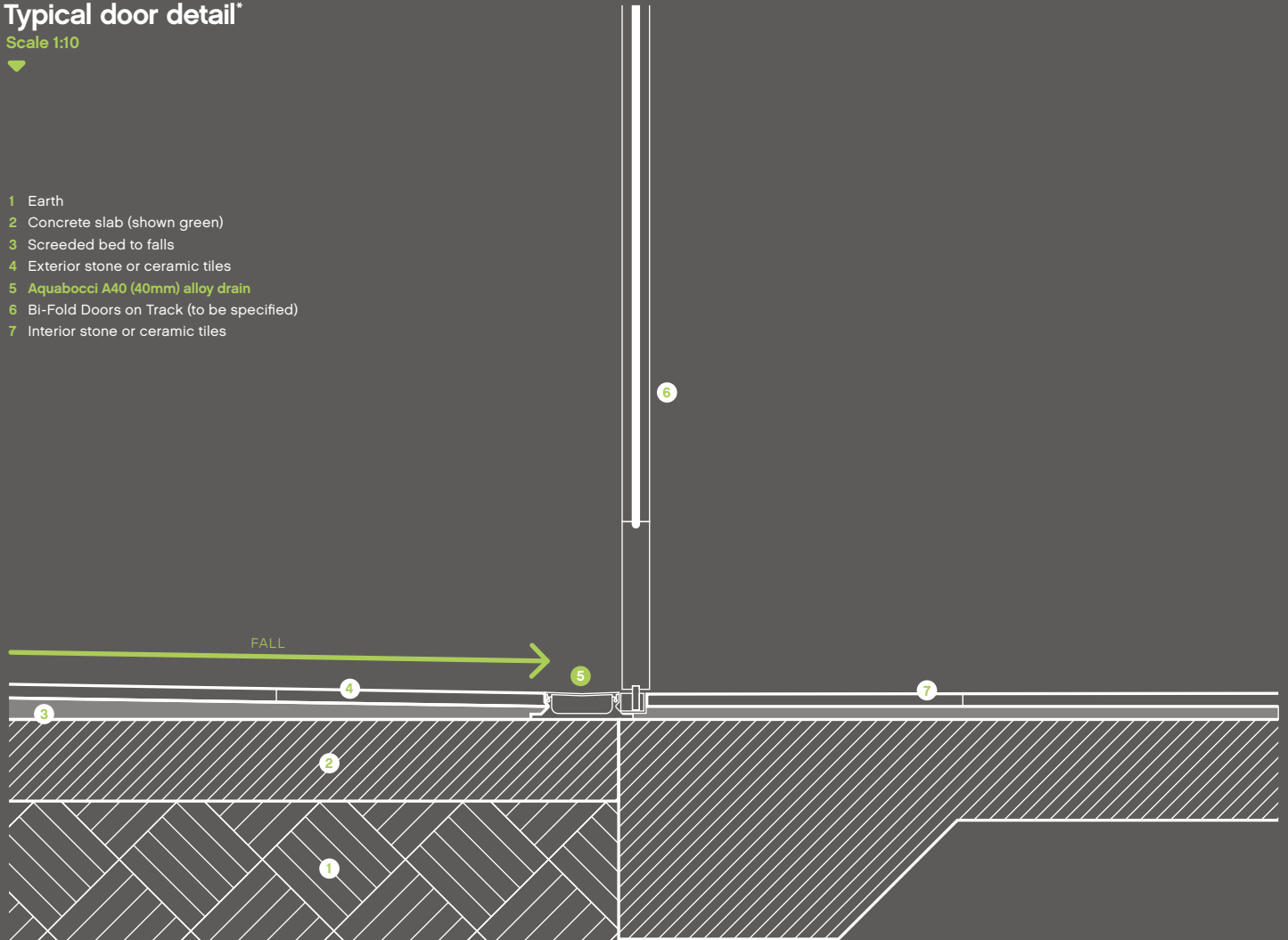
P2 S66 Slimline balcony drain installed on top of concrete slab with 15mm stone tiles.

Typical door detail*

Scale 1:10



- 1 Earth
- 2 Concrete slab (shown green)
- 3 Screeded bed to falls
- 4 Exterior stone or ceramic tiles
- 5 Aquabocci A40 (40mm) alloy drain
- 6 Bi-Fold Doors on Track (to be specified)
- 7 Interior stone or ceramic tiles



*Can also be used for bi-fold, sliding and inline doors

alloy drainage system

stylish bespoke stainless wet rooms safe flexibility

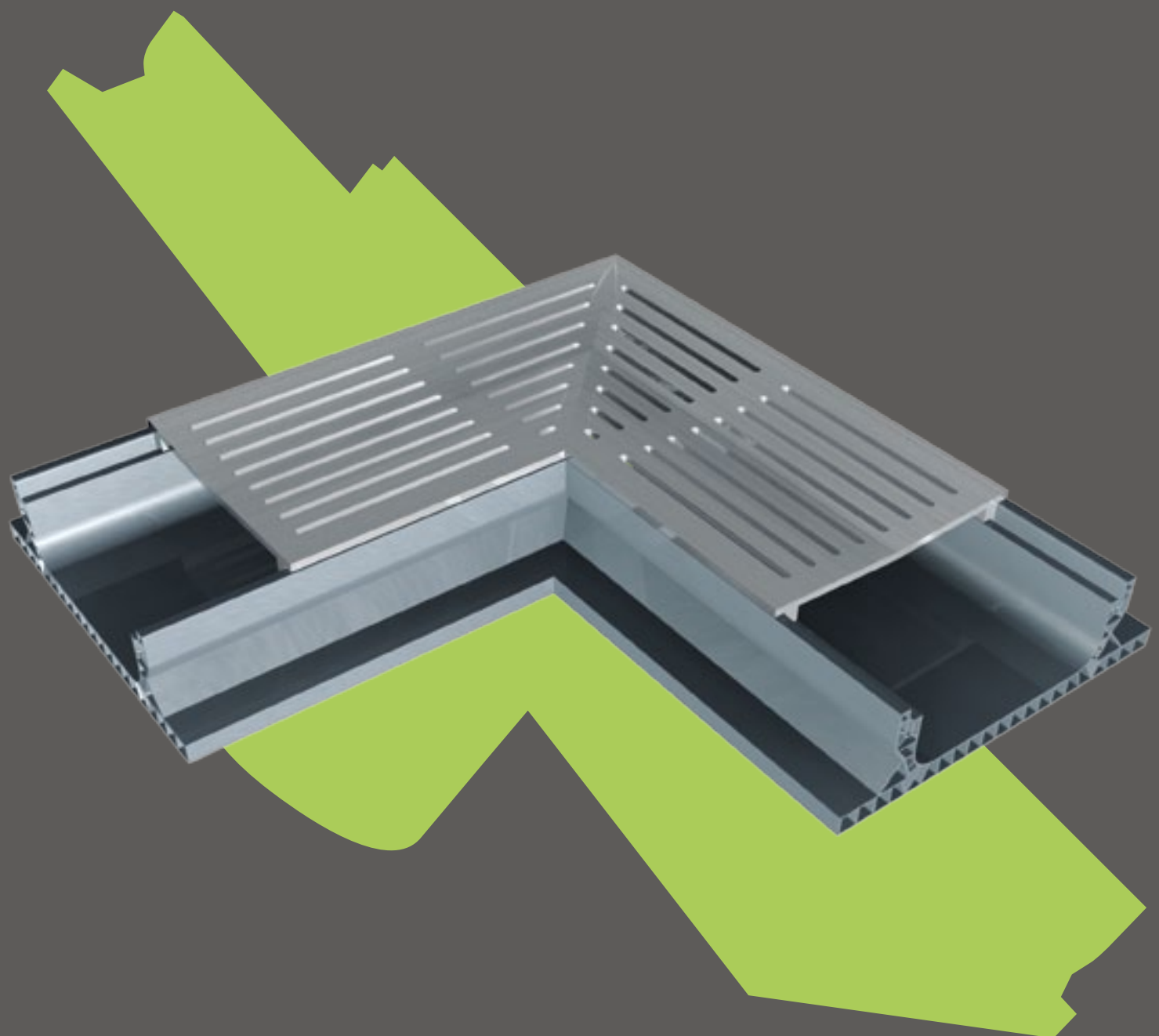
affordable functional innovation leak free waterproofing

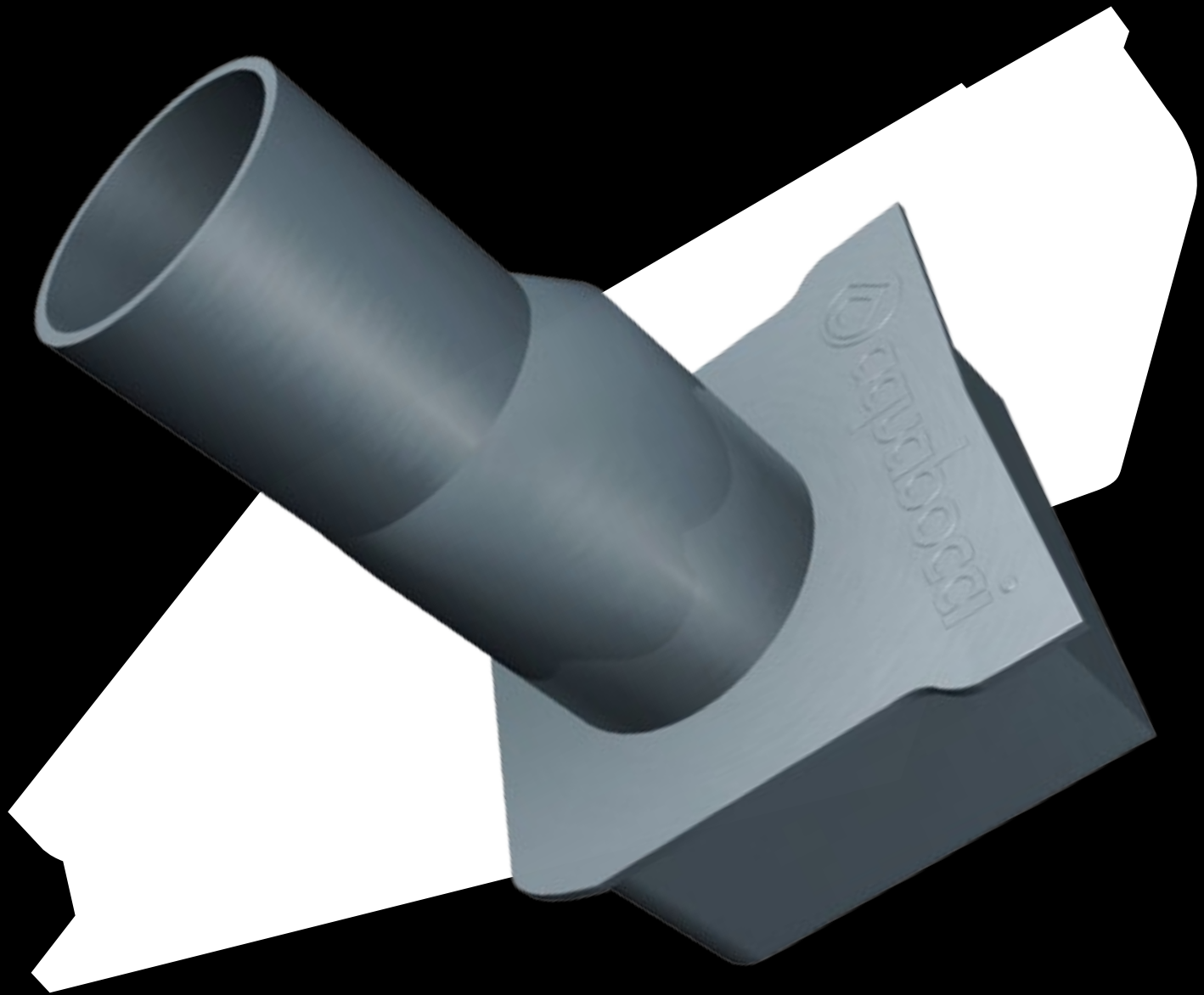
lightweight non-slip limitless swimming pools anodized

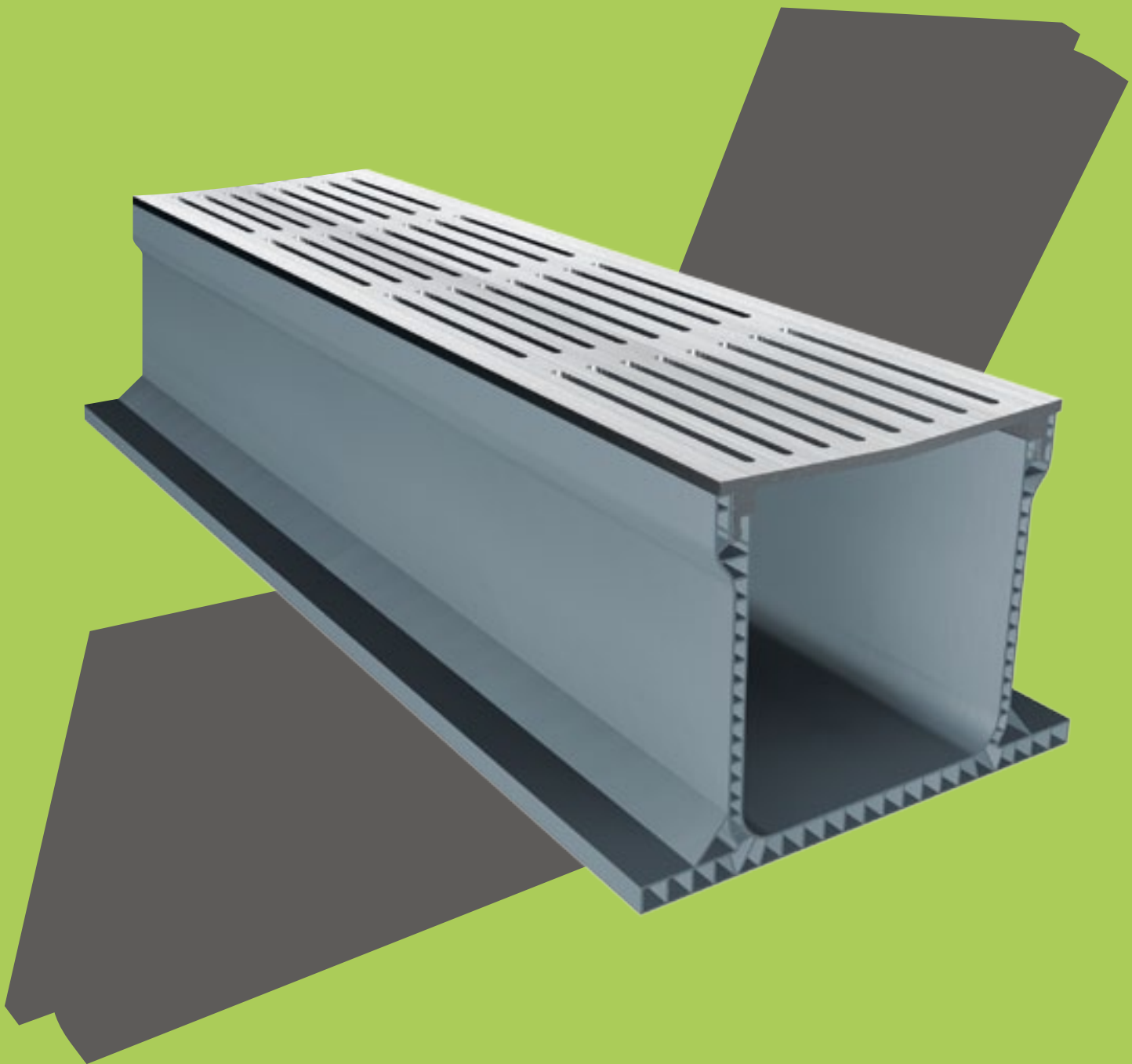
unique driveway spigot outlet csiro sophisticated

public space rust free easy installation balconies

cost-effective high waterflow cutting edge









wet rooms made easy

If you'd love to have a contemporary, stylish wet room in your home, then we have the answer. Aquabocci drains are designed by industrial designers and represent the latest innovation in bathroom drainage – a highly functional, leak free shower grate that makes wet room creation easy.



23



What is a wet room?

A wet room is a waterproof shower area with a controlled drainage outlet that gives your bathroom a designer feel. Transforming your bathroom into a contemporary wet room will completely change the look and feel of your bathroom.

Frame your shower

The Aquabocci FramerDrain lets you design a unique wet room look with the creation of a curb-less area that doesn't need a traditional shower tray with wedge cuts in the tiles. Simply use two lineal shower grates to frame your shower wall to wall to create a bespoke bathroom design that's both functional and stylish.

The best shower drainage on the market

The innovative Aquabocci shower drains include a special moulded tray, ensuring all wastewater flows directly into the spigot outlet. In addition our customised end caps mean there are absolutely no leakage points – the water can't escape!

Why choose Aquabocci?

Simple and elegant, here are some facts about the Aquabocci shower drains:

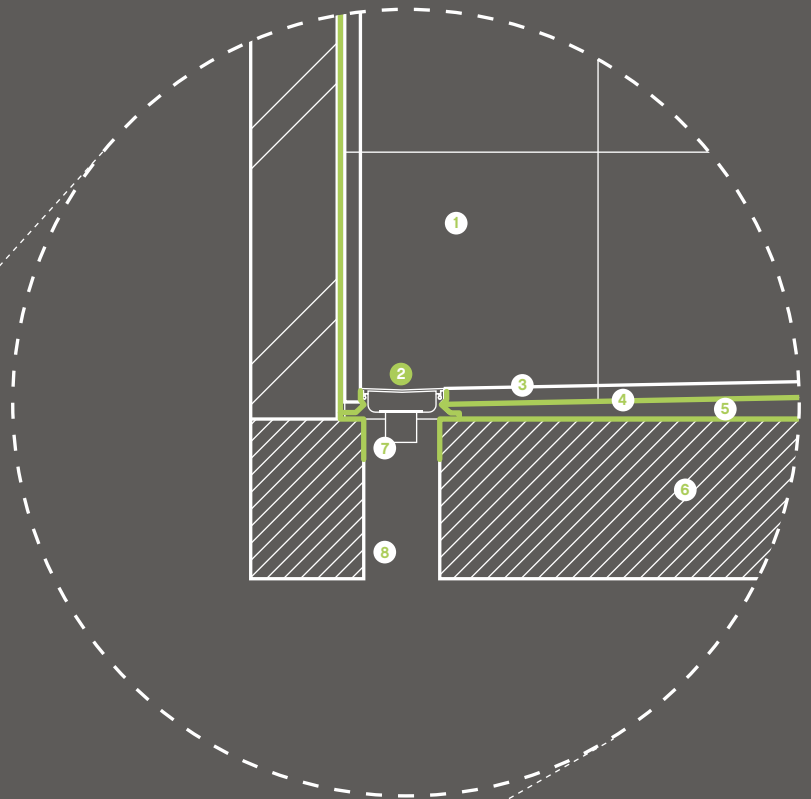
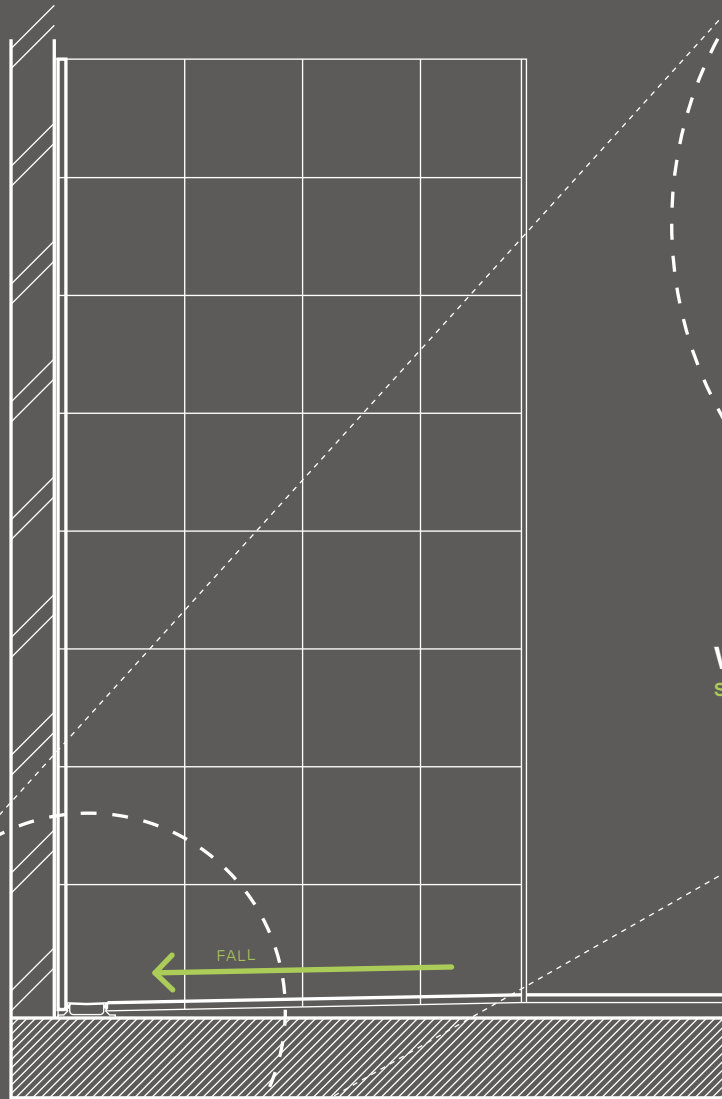
- **Say goodbye to ugly tile cuts:** Our shower grates do not require ugly wedge tile cuts that are required on traditional floor drains.
- **No more dirt build up:** Our cleverly designed system ensures that all dirt and hair will pass through the drain and not get caught on the drain lid.
- **Forget tea stains:** Our shower drains are made from a marine grade, fully anodized alloy making them lightweight and easy to clean – they don't tea stain or etch like stainless steel.

P1 A40 shower drains, 1400mm length with mitred corner.

P2 A40 shower drain wall installation with 15mm marble tile.

Shower wall section on concrete slab

Scale 1:20



Waterproofing detail ▲

Scale 1:10

- 1 Stone or ceramic wall tiles
- 2 Aquabocci A40 alloy drain
- 3 Stone or ceramic floor tiles
- 4 Waterproofing membrane (shown green)
- 5 Screeded bed to falls
- 6 Concrete slab
- 7 Aquabocci spigot
- 8 Core hole in concrete slab



say goodbye to slips

Introducing the slip-free lineal grate. Throughout the design process we use technologies which have enabled us to develop cutting edge products such as the Aquabocci WunderGrip, a slip free lid that is available on all of our lineal grates.

Aquabocci's innovative WunderGrip achieves the R13 slip rating from the CSIRO (*view website for full test results*). The lid of the drain has been treated using a unique technology to create a special, slip-free surface that's perfect for bathrooms, swimming pools, driveways and balconies.

wundergrip

S66 model with Aquabocci
Custom Matt Black lid

27



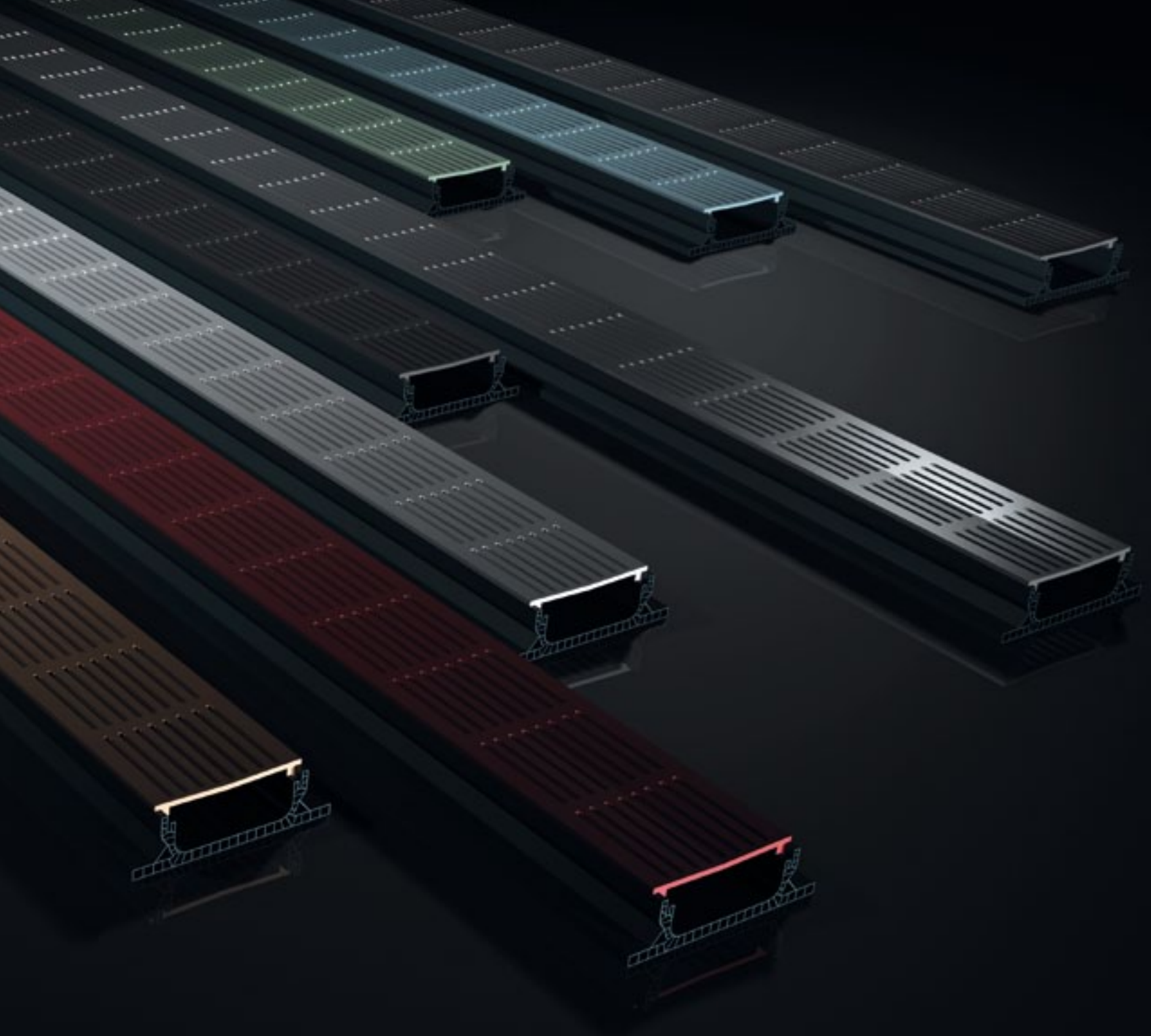


aquabocci custom

We have taken the lineal grate concept to a whole new level by offering our clients the opportunity to create a totally custom finish to their drain.

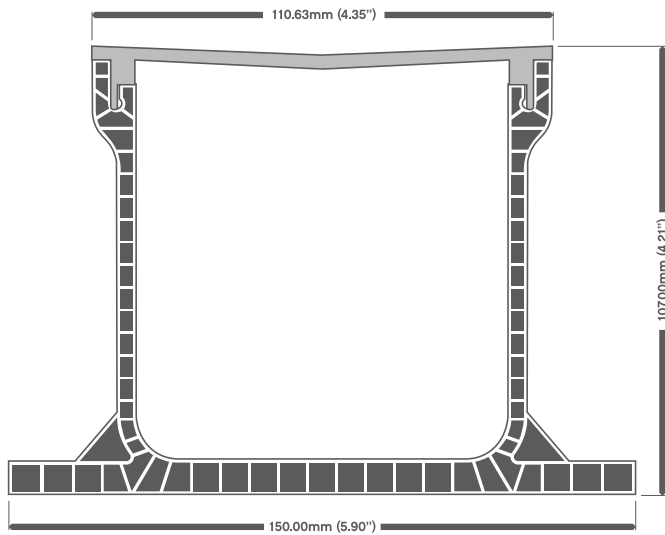
The aluminium alloy is anodized to increase corrosion resistance, to increase surface hardness, and to allow dyeing (colouring), improved lubrication, or improved adhesion. The anodic layer is non-conductive

Experience our latest technology and try one of our exclusive styles including matt black or we will develop your own idea's in our studio.



aquabocci®

A100



▼ A100 / 2800mm (110.24")



▼ A100 / 1244mm (48.98")

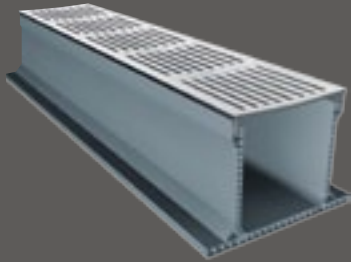


- Deep tray with a water flow rate of 280 litres per minute.
- Designed to be installed on compressed earth with paving stones or where a set down has been cut in the concrete slab.
- Commonly used in parks, gardens, driveways and swimming pool areas.

A100

System Fittings

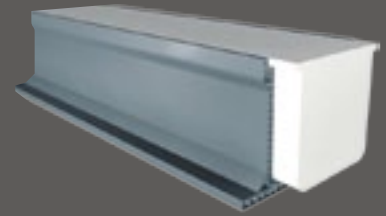
▼ Linear Section



▼ Corner



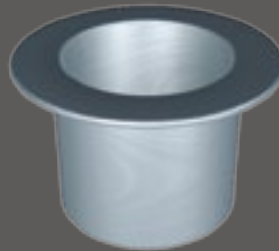
▼ Poly Former



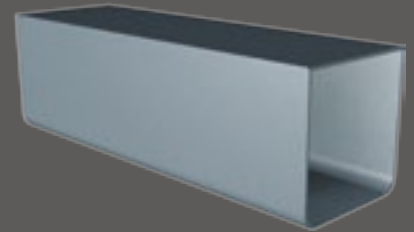
▼ End Cap



▼ Spigot



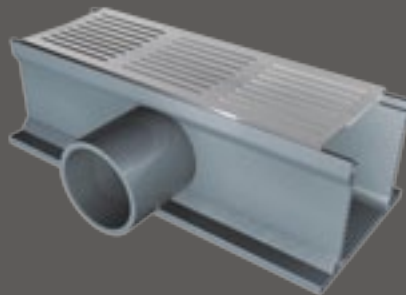
▼ Joiner



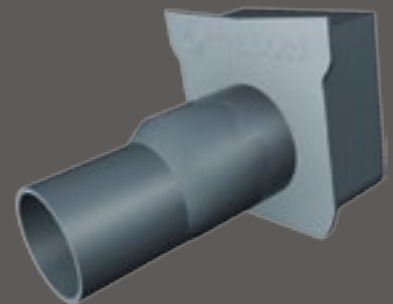
▼ Vertical Dropper



▼ Side Dropper

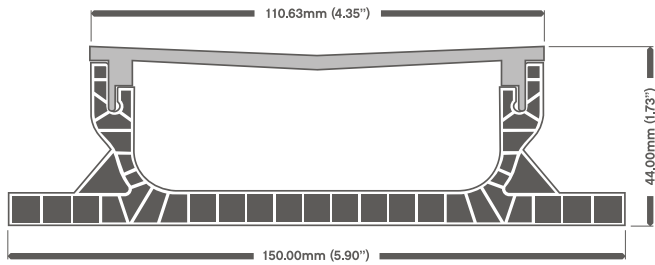


▼ End Outlet



aquabocci®

A40



▼ A40 / 2800mm (110.24'')



▼ A40 / 1244mm (48.98'')

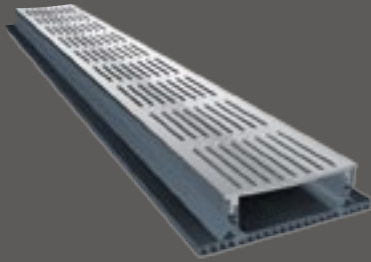


- Shallow tray with a water flow rate of 220 litres per minute.
- Designed to be installed on a concrete slab with stone or ceramic tiles.
- Commonly used on second floor balconies, wet rooms and swimming pool areas.

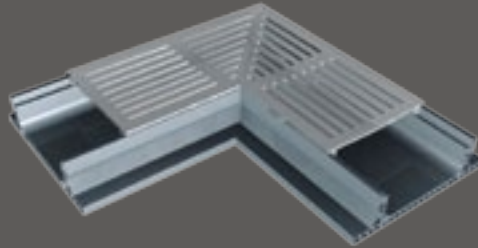
A40

System Fittings

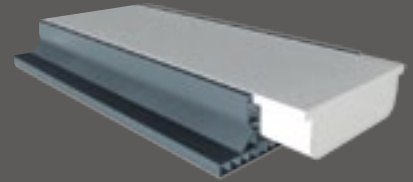
▼ Linear Section



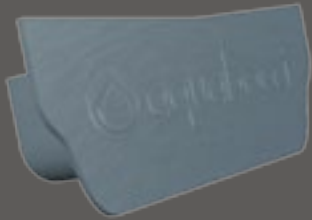
▼ New Corner



▼ Poly Former



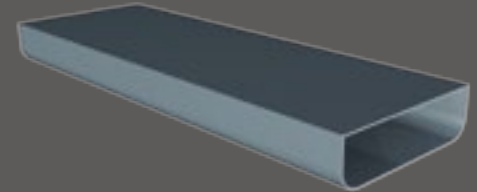
▼ End Cap



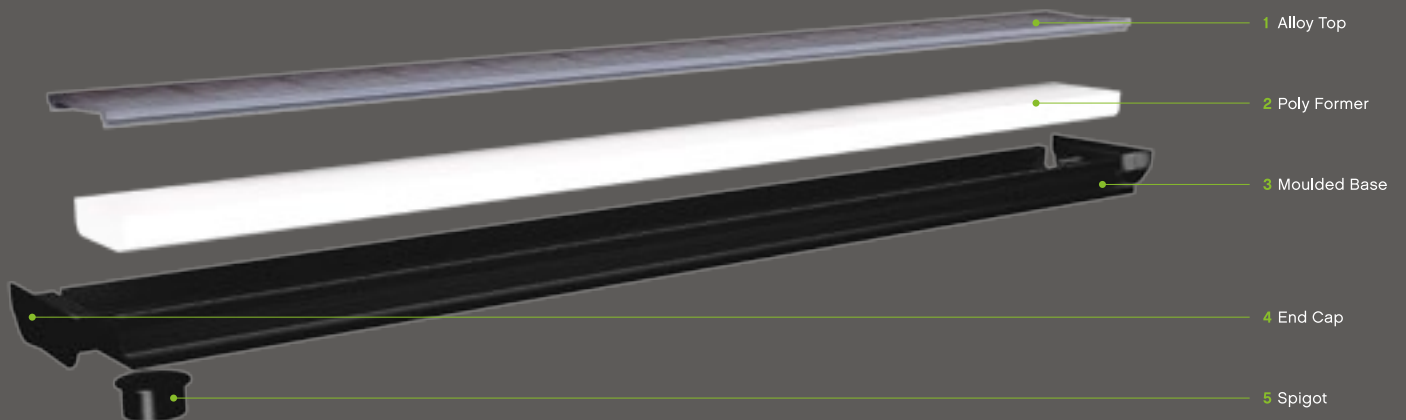
▼ Spigot



▼ Joiner

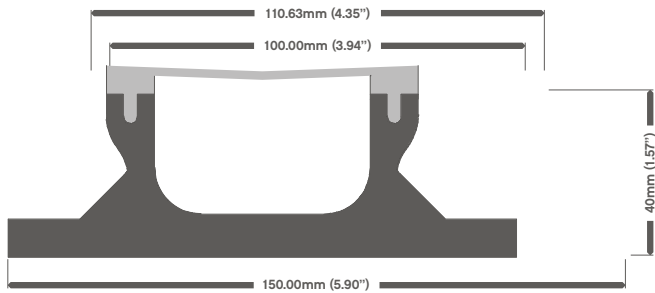


▼ Linear Section – Exploded View



aquabocci®

S66 Slimline



▼ S66 / 2800mm (110.24'')



▼ S66 / 1244mm (48.98'')



1244mm (48.98'')

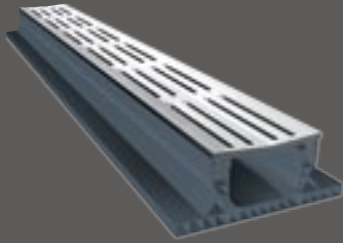
2800mm (110.24'')

- Shallow tray with a water flow rate of 160 litres per minute.
- Designed to be installed on a concrete slab with stone or ceramic tiles.
- Commonly used on second floor balconies, wet rooms and swimming pool areas.

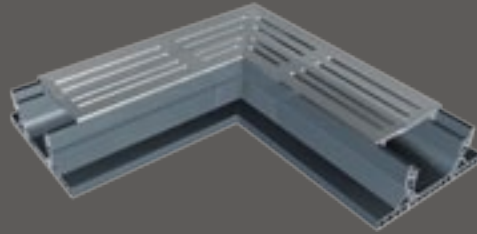
S66 Slimline

System Fittings

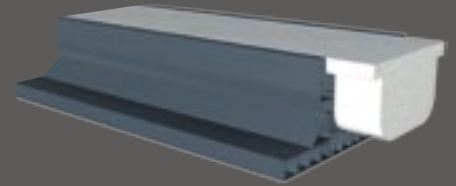
▼ Linear Section



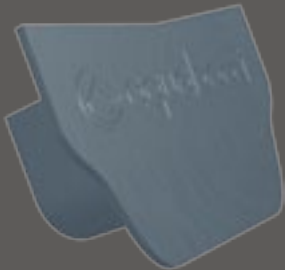
▼ Corner



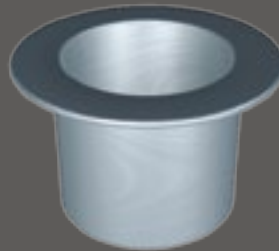
▼ Poly Former



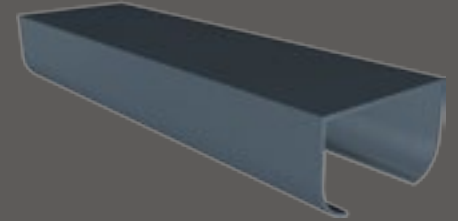
▼ End Cap



▼ Spigot



▼ Joiner



▼ Linear Section – Exploded View

